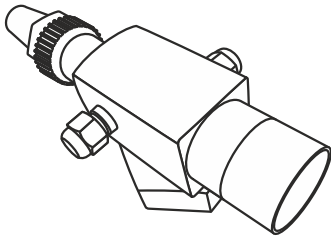


«ROTALOCK» VALVE FP-RV

Operation manual



Rotalock valve FP-RV is designed for blocking and interception of different devices (compressors and receivers), which allows to make service and maintenance and makes the replacement of any equipment easier. Two service ports ¼ SAE designed to connect controlling and measuring equipment and devices.

Body material – steel with anticorrosive coating.

All valves are tested on durability and tightness.

SAFETY INSTRUCTION

- ⚠ Please read carefully this instruction. Elimination of this instructions may lead to breakdown of valve, staff injury, and also to refrigeration system malfunctioning.
- ⚠ Installation, service and maintenance must be done by qualified staff with required knowledge and skills.
- ⚠ Check the working of valve frequently, also check if there are any leaks in moving parts and connections.
- ⚠ Valve FP-BV is non-repairable device. In case of malfunctioning it must be replaced.

INSTALLATION INSTRUCTIONS

- Valve's design allows to install it in any position.
- Prior to installation remove all the caps, unscrew service nipple nuts, open the locking mechanism.
- Check if you left necessary gap between valve's exit and copper tube.
- Place gasket into it's saddle in connection branch and screw the valve on (do not tighten the nut).
- Make soldering as quickly as possible. Aim a flame of your burner away from the valve. Use silver containing solder (minimum 30% of silver) with flux.
- When soldering provide additional cooling and make sure that valve's temperature do not exceed 150 C.
- After soldering clean all the connection parts from flux and paint them or protect from corrosion any other way.
- Tighten the nut according to the given data in the table below.

Designation (connecting thread)	Torque (Nm)
FP-RV-014SAE; FP-RV-038SAE	10...20
FP-RV-1-...	70...80
FP-RV-114-...	110...135
FP-RV-134-...	135...160
FP-RV-214-...	165...190

- Connect pipes of the control equipment and automatic to service ports.

SPECIFICATION

Maximum operating pressure: 45 bar from -10 to 140 °C

32 bar from -40 to 140 °C

Testing pressure: 58 bar

Flow temperature: from -40 to 140 °C

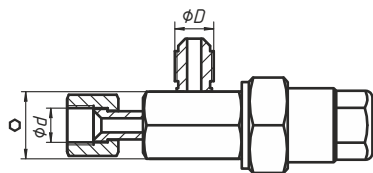
Environment temperature: from -40 to 70 °C

Leakage: m ax. 3 g/year

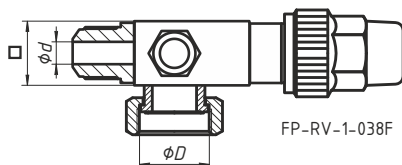
Suitable for: C FC, HFC, HCFC, mineral oil, synthetic oil

CONNECTION

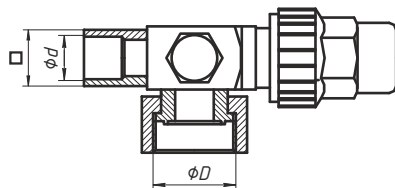
Model	Connection	
	Thread, D	Flare, d
FP-RV-014SAE	7/16" – 20UNF (1/4" SAE)	7/16" – 20UNF (1/4" SAE)
FP-RV-038SAE	5/8" – 18UNF (3/8 SAE)	5/8" – 18UNF (3/8 SAE)
FP-RV-1-038F	1" UN	5/8" – 18UNF (3/8 SAE)
FP-RV-1-012	1" UN	1/2" ODS
FP-RV-1-038	1" UN	3/8" ODS
FP-RV-1-058	1" UN	5/8" ODS
FP-RV-114-058	1 1/4" UN	5/8" ODS
FP-RV-114-034	1 1/4" UN	3/4" ODS
FP-RV-114-078	1 1/4" UN	7/8" ODS
FP-RV-114-118	1 1/4" UN	1 1/8" ODS
FP-RV-134-078	1 3/4" UN	7/8" ODS
FP-RV-134-118	1 3/4" UN	1 1/8" ODS
FP-RV-134-138	1 3/4" UN	1 3/8" ODS
FP-RV-134-158	1 3/4" UN	1 5/8" ODS
FP-RV-214-138	2 1/4" UN	1 3/8" ODS
FP-RV-214-158	2 1/4" UN	1 5/8" ODS
FP-RV-214-218	2 1/4" UN	2 1/8" ODS



FP-RV-014SAE; FP-RV-038SAE



FP-RV-1-038F



PACKAGE

Package including:

- «Rotalock» valve 1 pc.
- teflon gasket 1 pc.

STORAGE

Store valves in manufacturer's packing in warehouse within temperatures between -40 and 50 C and 80% humidity. The presents of substances in the air that cause corrosion is strictly prohibited. Storage period – 3 years.

DISMANTLING AND UTILIZATION

Dismantle valve in the following sequence:

- Prior to dismantling valve make sure that pressure in the refrigeration circuit equals the surrounding's.
- Disconnect pipes of controlling and measuring devices from service pipes.
- Cut the connected part of the tube close to the valve.
- Unscrew nut and dismantle the valve.

Utilization of valves is done according to "Circulation regulations of scrap and waste of non-ferrous metals and their disposal", approved by resolution of the Government of the Russian Federation from 11/05/2001 #369.